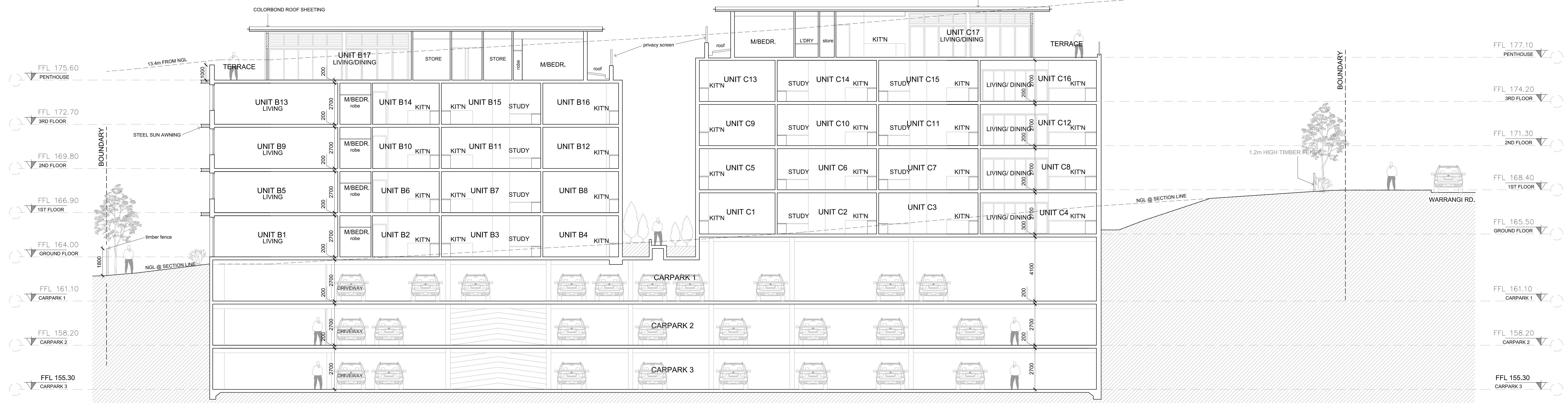
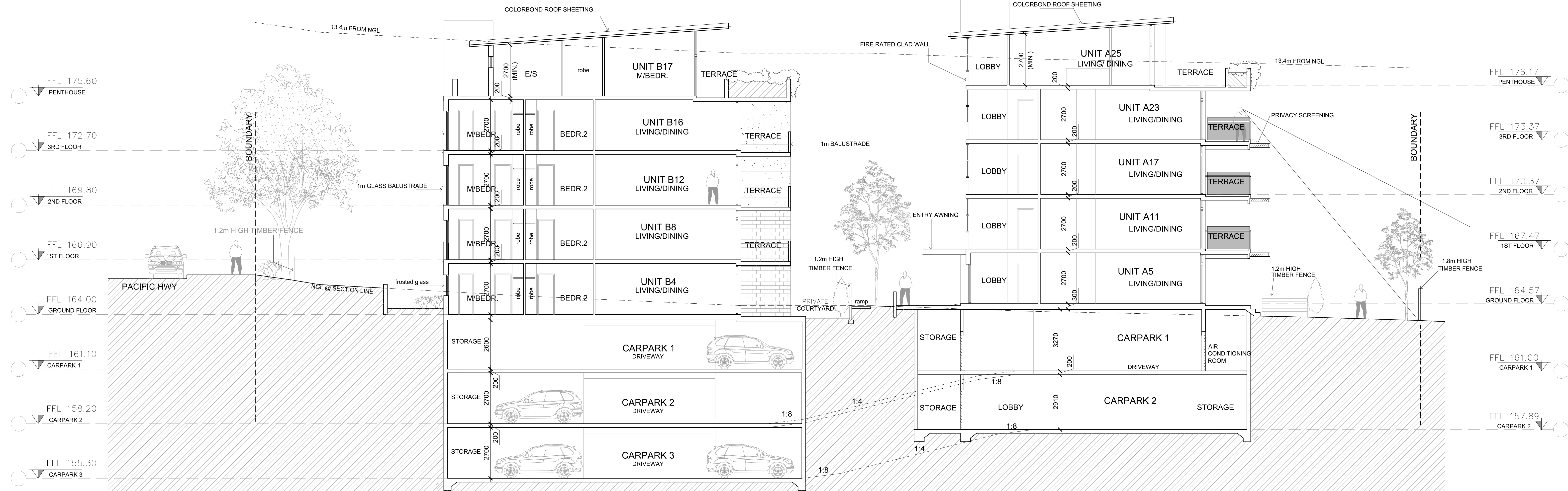


SECTION AA (BLOCK A)



SECTION BB (BLOCKS B + C)



SECTION CC (BLOCKS A + B)

BASIC REQUIREMENTS

- All units must have 3 star (≥4.5 but <6.0min) rated shower heads
- All units must have 4 star rated toilet flushing system
- All units must have 4 star rated kitchen & bath taps
- All units must have 5 star rated gas instantaneous hot water system
- Each bathroom in all units must have an individual fan into central duct + VSD
- Each bathroom in all units must have a manual switch on/off
- Each kitchen in all units must have an individual fan into central duct + VSD
- Each kitchen in all units must have a manual switch on/off
- Each laundry in all units must have an individual fan into central duct + VSD
- Each laundry in all units must have a manual switch on/off
- All units must have 1 phase airconditioning 3.5 star (new rating) to living areas for cooling & heating
- Artificial lighting to each kitchen, bathroom, laundry & hallway (minimum)
- Lift cars must have fluorescent lighting and be connected to lift call button
- Car park area must be ventilated by supply & exhaust have a carbon monoxide monitor + VSD fan. The primary type of artificial lighting is fluorescent, with timer clock & motion sensors
- Lobbies and upper level hallways must have fluorescent lighting with a manual on time off switch and no mechanical ventilation
- Lifts must have gearless traction with VVV F motors servicing typically 7 levels (including basement)
- Garbage room ventilation exhaust only, with fluorescent lighting with a manual on manual off switch
- Common toilets must have 3 star rated toilet flushing system
- Common taps must be 4 star rated
- The development must have a central water tank-rainwater or stormwater of about 10,000 litres
- The central water tank must be configured to collect run off from at least 500 sqm of roof area of buildings in the development
- All units must have a gas cooktop & electric ovens
- All units must have a well ventilated fridge space
- All units must have an indoor sheltered clothes drying line